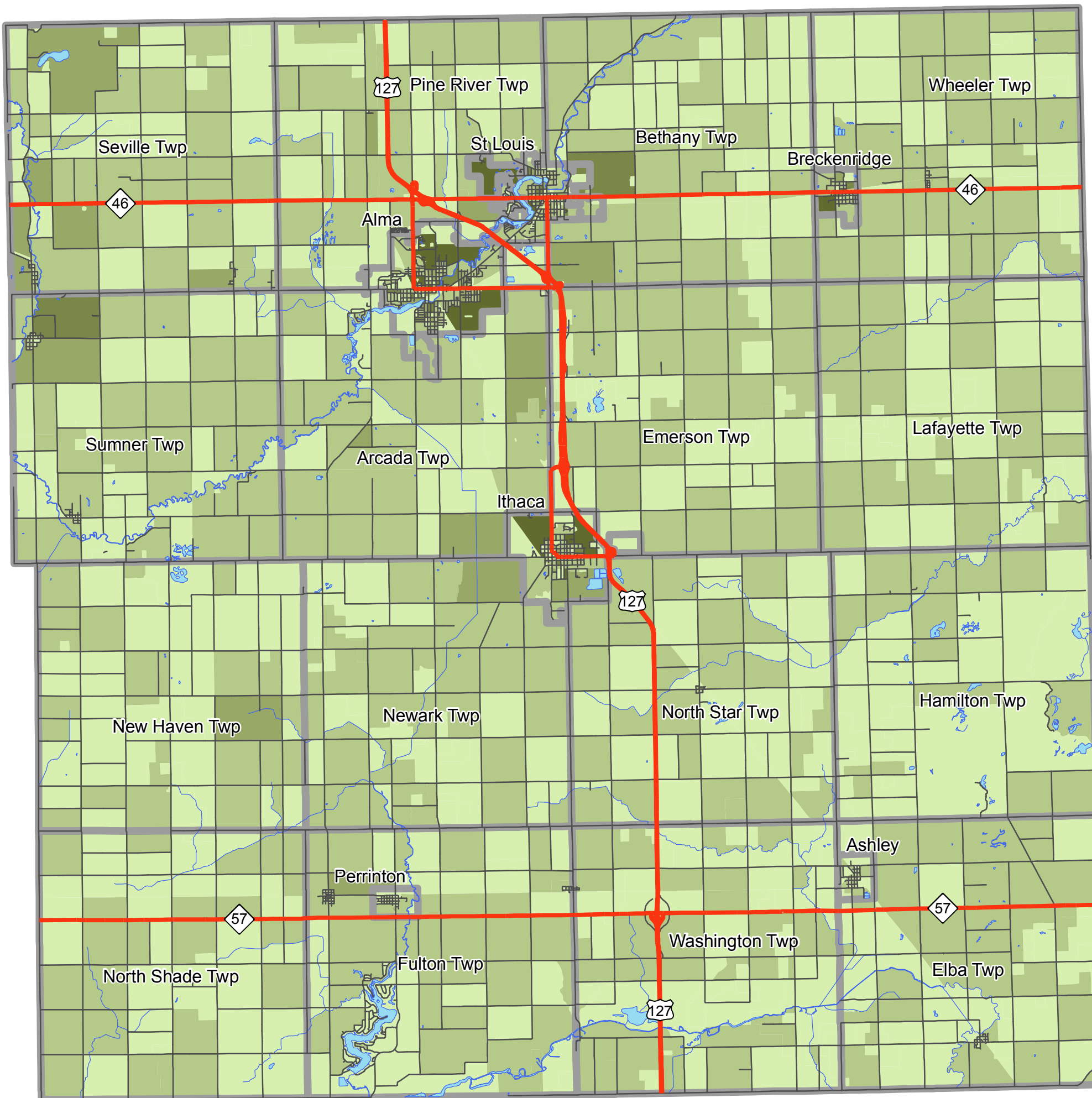


G.R.E.A.T. Project

Number of Renter Occupied Housing Units in 2000

- 0
- 1 - 5
- 6 - 10
- 11 - 25
- 26 - 222
- Jurisdictions
- Highways
- Roads
- Lakes
- Streams



PARTNERSHIPS
for **C**HANGE
Sustainable Communities



Sources:
Michigan Center for Geographic Information,
Department of Information Technology

U.S. Census Bureau

Map Produced September 2008